

See discussions, stats, and author profiles for this publication at: <https://www.researchgate.net/publication/336930866>

Soil net nitrogen mineralisation across global grasslands

Article in *Nature Communications* · October 2019

DOI: 10.1038/s41467-019-12948-2

CITATION

1

READS

776

44 authors, including:



Anita C Risch

Swiss Federal Institute for Forest, Snow and Landscape Research WSL

130 PUBLICATIONS 4,028 CITATIONS

[SEE PROFILE](#)



Raul Ochoa-Hueso

Universidad de Cádiz

79 PUBLICATIONS 1,097 CITATIONS

[SEE PROFILE](#)



Martin Schuetz

Swiss Federal Institute for Forest, Snow and Landscape Research WSL

112 PUBLICATIONS 3,774 CITATIONS

[SEE PROFILE](#)



Beat Frey

Swiss Federal Institute for Forest, Snow and Landscape Research WSL

282 PUBLICATIONS 5,588 CITATIONS

[SEE PROFILE](#)

Some of the authors of this publication are also working on these related projects:



Historia de la vegetación altoandina del Ecuador en base al registro de polen fósil [View project](#)



Effect of high-density, short-duration stocking on a mesic grassland [View project](#)

ARTICLE

<https://doi.org/10.1038/s41467-019-12948-2>

OPEN

Soil net nitrogen mineralisation across global grasslands

A.C. Risch  et al.[#]

Soil nitrogen mineralisation (N_{\min}), the conversion of organic into inorganic N, is important for productivity and nutrient cycling. The balance between mineralisation and immobilisation (net N_{\min}) varies with soil properties and climate. However, because most global-scale assessments of net N_{\min} are laboratory-based, its regulation under field-conditions and implications for real-world soil functioning remain uncertain. Here, we explore the drivers of realised (field) and potential (laboratory) soil net N_{\min} across 30 grasslands worldwide. We find that realised N_{\min} is largely explained by temperature of the wettest quarter, microbial biomass, clay content and bulk density. Potential N_{\min} only weakly correlates with realised N_{\min} , but contributes to explain realised net N_{\min} when combined with soil and climatic variables. We provide novel insights of global realised soil net N_{\min} and show that potential soil net N_{\min} data available in the literature could be parameterised with soil and climate data to better predict realised N_{\min} .

[#]A full list of authors and their affiliations appears at the end of the paper.

Soil nitrogen (N) availability is one of the most important drivers of ecosystem productivity^{1–3} and microbial decomposition⁴, and is key in regulating N cycling. During the breakdown and depolymerisation of organic material to monomers and inorganic N, plants and microbes compete for these N resources^{5–7}. The net balance of N mineralisation and immobilisation (soil net N_{\min}) is mediated by soil physico-chemical properties, aboveground and belowground litter input, plant and microbial nutrient demand and climatic factors^{5,8–13}, and is regarded as a good index of overall soil N availability⁵. Soil net N_{\min} usually is greater in well-aerated soils from more humid climates at lower latitudes^{14–16}, reflecting the controls of soil temperature, moisture and oxygen content over microbial activity. However, climatic conditions also shape soil properties over long time-scales^{17,18}, so understanding the impact of climate and soil properties for soil net N_{\min} is crucial to achieve robust estimates of soil N availability, and ultimately, productivity in terrestrial ecosystems.

Soil net N_{\min} is commonly estimated either in the field or laboratory. Field measures represent realised soil net N_{\min} constrained by site macro-climatic and micro-climatic conditions (Fig. 1) and are typically collected at local to regional scales¹². In contrast, studies at the continental^{15,16} or global scale^{14,19} generally rely on laboratory incubations that estimate potential soil net N_{\min} . Laboratory incubations use homogenised soil samples incubated under optimised and controlled temperature and

moisture conditions to allow the comparison of samples collected from different locations in a standardised way. Yet, homogenisation disrupts the soil structure and removes plant residues, which may affect these estimates^{20,21}. Laboratory measures also fail to account for soil micro-climatic differences found under field conditions. Although potential may in some cases effectively predict realised soil net N_{\min} , we do not know whether, or under what conditions this is the case. Successfully identifying the environmental drivers connecting the two indices could greatly enhance the use of potential soil net N_{\min} data to model and predict global patterns in realised soil net N_{\min} . This would facilitate our understanding of how global soil N availability may respond to future global anthropogenic influences such as climate change or eutrophication^{22,23}.

We conducted coordinated measurements of realised and potential soil net N_{\min} , and assessed soil properties and climatic variables across 30 grasslands on six continents that span a globally relevant range of climatic and edaphic conditions (Fig. 2; Supplementary Tables 1 and 2). We focused on grassland ecosystems because they cover approximately one-third of the Earth's terrestrial landscape^{24,25}, are threatened by global change^{22,23,26}, and provide important ecosystem services intricately linked with N_{\min} . Notably, they store 20–30% of the terrestrial C, mostly in the soil^{24,25,27}. Here, we describe the global spatial patterns in realised and potential soil net N_{\min} and the relationship between them. We then explore the key drivers of each soil net N_{\min} index

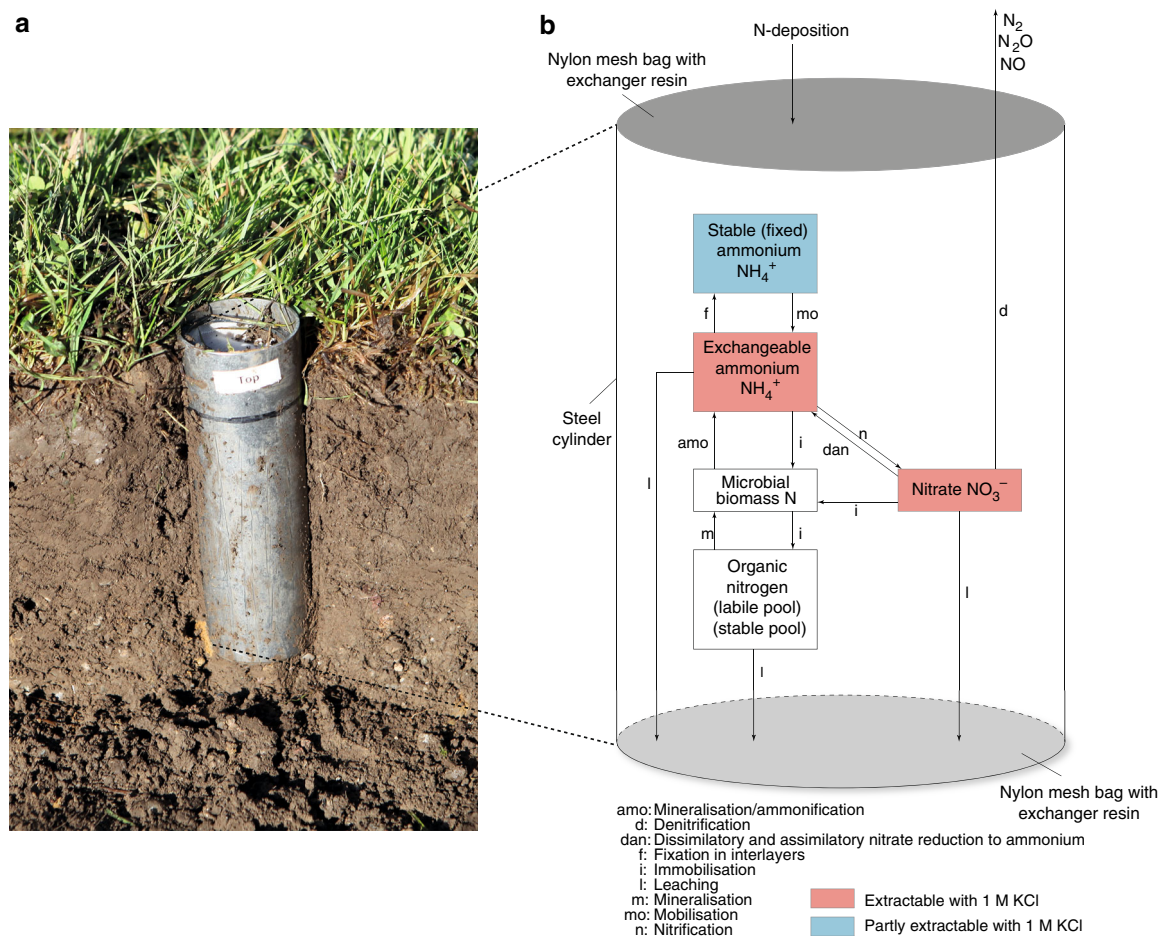


Fig. 1 Realised soil net N mineralisation. **a** Photo of a cylinder used during field measurements. A mesh-bag filled with ion-exchange resin is visible at the top of the cylinder. **b** Schematic N mineralisation processes as found within our cylinders. An exchange resin bag on top captured atmospheric N deposition/N in run-off, another resin bag at the bottom of the cylinder captured N leaching from the soil column. Details on calculation of soil net N mineralisation based on the variables measured are given in the “Methods” section

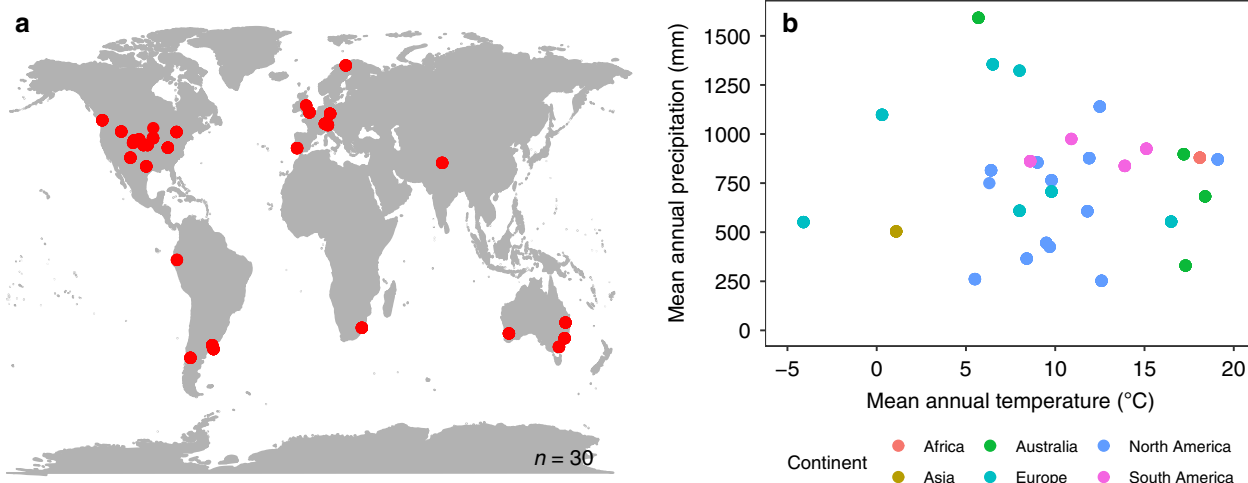


Fig. 2 Geographic and climatic distribution of experimental sites. **a** Location of the 30 NutNet sites where the field experiment was conducted and soil samples were collected for laboratory analyses. **b** The 30 study sites represent a wide range of mean annual temperature (MAT) and mean annual precipitation (MAP). Our sites also cover a wide range of soil edaphic conditions as described in the main text and shown in Supplementary Table 2. Source data are provided in the source data file

separately. Finally, we use structural equation modelling (SEM) to build a system-level understanding of how these specific climate and soil variables together with potential soil net N_{min} could be used to predict realised soil net N_{min} . This final step provides a basis upon which extensively available data on potential soil net N_{min} could be leveraged to improve predictions of realised soil net N_{min} at a global scale.

First, we expect opposite global spatial patterns in realised and potential soil net N_{min} : Namely, decreasing realised soil net N_{min} with increasing distance to the equator due to colder growing season temperatures and therefore lower mineralisation. Concurrently, we expect increasing potential soil net N_{min} with increasing distance to the equator, because higher amounts of labile organic material accumulated under colder conditions are mineralised when incubated under standardised conditions in the laboratory. Second, climate variables and the presence of plant residues should predict realised soil net N_{min} through their effects on soil properties and the activity of soil biota^{11–13}. In contrast, soil chemical properties, soil texture and the activity/abundance of soil biota may be more important for potential soil net N_{min} than climatic variables^{11–13}. Nonetheless, as climatic conditions impact soil formation^{17,18}, we expected that climate provides additional predictive information to explain potential soil net N_{min} . Third, we expect that realised soil net N_{min} can be estimated by combining key environmental drivers with potential soil net N_{min} .

All 30 sites (Fig. 2, Supplementary Tables 1 and 2) are part of the Nutrient Network globally distributed experiment (NutNet [<https://nutnet.umn.edu/>])²⁸. We incubated one soil sample per plot in the field to assess realised soil net N_{min} (Fig. 1)²⁹ and collected additional samples to measure potential soil net N_{min} and soil properties, i.e., water holding capacity, bulk density, C and N content, texture, pH, pore space, microbial biomass, and archaeal (AOA) and bacterial (AOB) ammonia oxidiser abundance using identical materials and methods at each site. The field incubation averaged 42 days (range 36–57) and ended at peak plant biomass at each site. Soil moisture was kept at 60% of the field capacity of each sample and 20 °C for the 42-day laboratory incubations. Climate data for each site were obtained from global data sets³⁰.

We dropped correlated variables prior to analyses³¹, calculated the correlation between realised and potential soil net N_{min} and then explored the global spatial patterns in realised and potential soil net N_{min} with linear mixed effects models (LMMs). Then, we

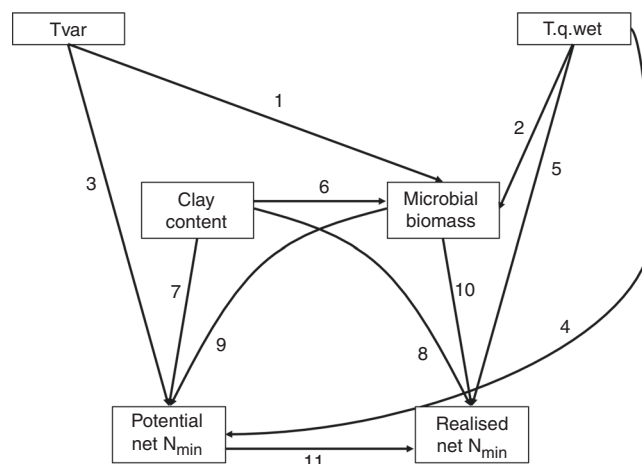


Fig. 3 Conceptual model on the expected causal relationships between environmental variables, soil properties and potential soil net N_{min} to estimate realised soil net N_{min} . The conceptual model is based on hypotheses derived from the literature and our linear mixed effects model results (see Table 1 for hypotheses and references). Tvar = temperature variability, T.q.wet = temperature of the wettest quarter

used LMMs and multilevel inference³² to determine the drivers of realised and potential soil net N_{min} . Based on the LMMs and existing literature, we developed a conceptual model of causal relationships among environmental drivers, potential soil net N_{min} and realised soil net N_{min} (Fig. 3 and Table 1)³³.

Here, we find that realised correlates only weakly with potential soil net N_{min} , and that different environmental parameters drive the two measures. However, potential soil net N_{min} contributes to explain realised N_{min} when combined with soil and climatic variables. We provide new insights for realised soil net N_{min} and show how potential soil net N_{min} data could be parameterised to better predict realised N_{min} in global grasslands.

Results and discussion

Global patterns and drivers of soil net N mineralisation. Across our 30 grassland sites, realised and potential soil net N_{min} were weakly positively correlated ($r = 0.21$, $p = 0.052$, $df = 83$,

Table 1 Potential relationships between variables derived from the literature and the linear mixed effects model results (see Table 2)

Path #	Pathway	Proposed relation
1, 2	Temperature variability or temperature of the wettest quarter → microbial biomass	The variability in temperature alone or in combination with precipitation affect microbial biomass across large scales ^{19,60,61}
3, 4	Temperature variability or temperature of the wettest quarter → potential N_{\min}	The best LMMs revealed that temperature variability had a positive, and temperature of the wettest quarter a negative effect on potential soil net N_{\min} (Table 2). These two direct effects likely stand for surrogates of missing direct drivers influenced by climate parameters that we could not identify in this current study. Thus, temperature variability and temperature of the wettest quarter represent a legacy effect of long-term climatic properties on soils in a global context.
5	Temperature of the wettest quarter → realised N_{\min}	The top LMMs in this study revealed that temperature of the wettest quarter has a positive effect on realised soil net N_{\min} (Table 2) across global grasslands.
6	Clay content → microbial biomass	Clay content positively affects microbial biomass on a global scale ^{14,16}
7, 8	Clay content → potential and realised N_{\min}	Clay content positively affects potential and realised N_{\min} ^{14,16}
9, 10	Microbial biomass → potential and realised N_{\min}	Microbial biomass has a positive effect on soil mineralisation rates N_{\min} ¹⁹
11	Potential N_{\min} → realised N_{\min}	The goal of this study was to determine whether knowledge about the potential of a soil to mineralise N can predict realised N_{\min} , but we only found a weak correlation between potential and realised N_{\min} (see main text, Supplementary Figure 1). However, the potential of soil microbes to mineralise N may be revealed when we include several climatic as well as soil biotic and abiotic predictors simultaneously into a model as done here. Thus, higher potential N_{\min} measured in the laboratory should result in higher realised N_{\min} in the field across global grasslands.

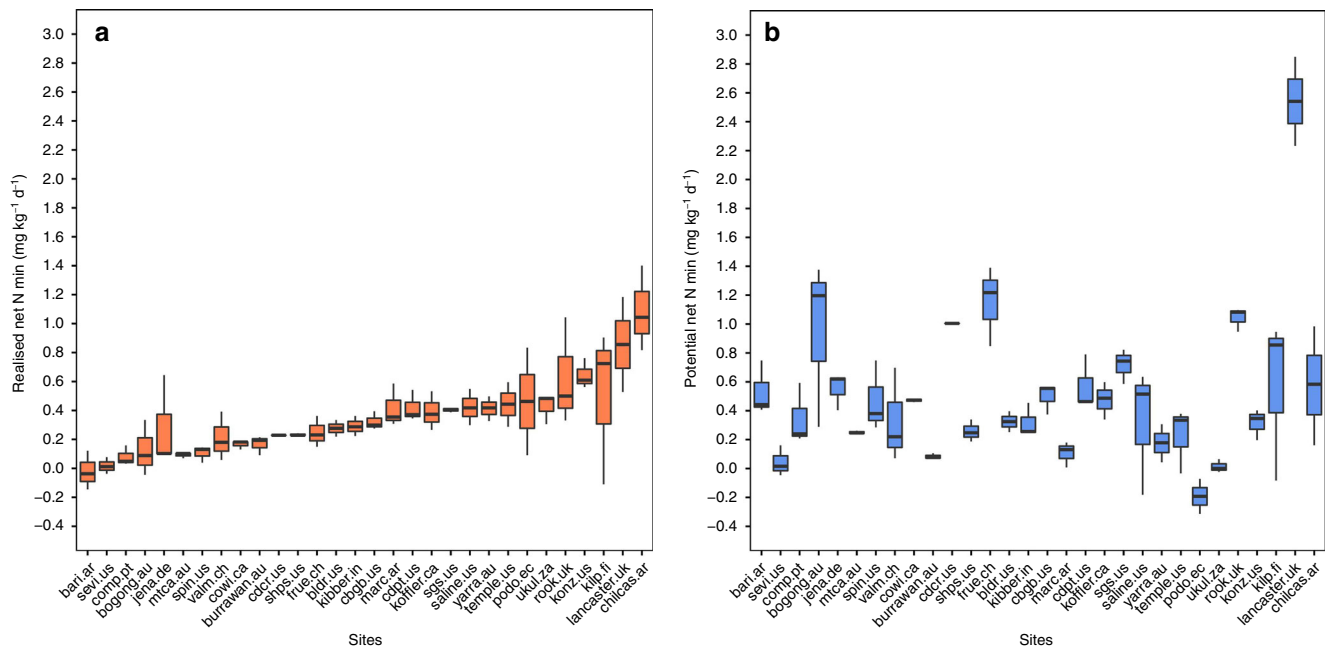


Fig. 4 Global patterns in realised and potential soil net N mineralisation (soil net N_{\min}). **a** Realised soil net N_{\min} at 30 NutNet sites ordered according to increasing realised soil net N_{\min} . **b** Potential soil net N_{\min} at the 30 NutNet sites. Order of sites according to **a**. The box represents the median (50th percentile), 25th and 75th percentile of the data for each site. The whiskers represent 1.5 times the inter-quartile range. Source data are provided in the source data file

Supplementary Fig. 1). Individual values of realised soil net N_{\min} ranged from -0.14 to 1.40 $\text{mg N kg soil}^{-1} \text{day}^{-1}$, and from -0.31 to 2.85 $\text{mg N kg soil}^{-1} \text{day}^{-1}$ for potential soil net N_{\min} (Fig. 4a, b). Among sites, average realised soil net N_{\min} ranged from -0.02 $\text{mg N kg soil}^{-1} \text{day}^{-1}$ at Bariloche, Argentina (bari.ar) to 1.09 $\text{mg N kg soil}^{-1} \text{day}^{-1}$ at Las Chilcas, Argentina (chilcas.ar), whereas average potential soil net N_{\min} ranged from -0.19 $\text{mg N kg soil}^{-1} \text{day}^{-1}$ at Podocarpus, Ecuador (podo.ec) to 2.54 $\text{mg N kg soil}^{-1} \text{day}^{-1}$ at Lancaster, UK (lancaster.uk, Fig. 4a, b). Within-site range of realised soil net N_{\min} was lowest at Sheep Station, UT, USA (shps.us; $\Delta = 0.02$ $\text{mg N kg soil}^{-1} \text{day}^{-1}$) and highest at Kilpisjärvi, Finland (kilp.fi; $\Delta = 1.01$ mg N kg soil^{-1}

day^{-1}); for potential soil net N_{\min} , the range was lowest at Mt. Caroline, Australia (mtca.au; $\Delta = 0.03$ $\text{mg N kg soil}^{-1} \text{day}^{-1}$) and highest at Bogong, Australia (bogong.au; $\Delta = 1.08$ $\text{mg N kg soil}^{-1} \text{day}^{-1}$; Fig. 4a, b).

Contrary to our predictions, realised soil net N_{\min} was not related to distance to the equator ($F_{1,28} = 0.057$, $p = 0.81$, Supplementary Fig. 2A), even when we corrected the values for growing season length for each site (Supplementary Fig. 3A, B). However, potential soil net N_{\min} significantly increased with increasing distance ($F_{1,28} = 22.86$, $p < 0.001$, Supplementary Fig. 2B), which supports our hypothesis but contrasts with meta-analyses^{14,15} reporting decreased potential soil net N_{\min}

Table 2 Model selection results for realised soil net N_{min} and potential soil net N_{min} starting with the full model including all explanatory variables (Supplementary Table 5) followed by multi-model inference to select the simplest models that explained the most variation in realised and potential soil net N_{min}

Top models	Exp. vars incl.	Estimate	SE	p	df	AICc
<i>Realised soil net N_{min}</i>						
Model 1	Intercept	0.521	0.037	<0.001	5	23.44
	T.q.wet	0.106	0.038	0.01		
	Microbial biomass	0.142	0.037	<0.001		
Model 2	Intercept	0.520	0.033	<0.001	4	23.50
	Microbial biomass	0.125	0.039	0.002		
Model 3	Intercept	0.521	0.041	<0.001	4	24.04
	Clay content	0.121	0.039	0.003		
Model 4	Intercept	0.518	0.036	<0.001	5	24.73
	T.q.wet	0.122	0.039	0.004		
	Bulk density	-0.133	0.036	<0.001		
<i>Potential soil net N_{min}</i>						
Model 5	Intercept	0.587	0.042	<0.001	6	68.64
	AOB	0.123	0.039	0.003		
	T.q.wet	-0.194	0.045	<0.001		
	Tvar	0.125	0.045	0.010		
Model 6	Intercept	0.587	0.046	<0.001	5	69.29
	AOB	0.134	0.041	0.002		
	T.q.wet	-0.149	0.046	0.003		
Model 7	Intercept	0.592	0.064	<0.001	4	69.45
	Microbial biomass	0.163	0.059	0.007		
Model 8	Intercept	0.589	0.052	<0.001	5	69.47
	T.q.wet	-0.206	0.056	0.001		
	Tvar	0.152	0.054	0.009		
Model 9	Intercept	0.590	0.057	<0.001	4	70.58
	T.q.wet	-0.150	0.058	0.015		

Model selection criteria were set at delta AICc < 2 due to our small sample size. All results are based on linear mixed effects models with site identity as a random factor. Exp. vars. incl. = All explanatory variables included in the respective model, Estimate = parameter estimate, SE = parameter estimate standard error, p = p-value related to each variable, df = degrees of freedom of the component model, AICc = corrected Akaike's information criterion, T.q.wet = temperature of the wettest quarter, AOB = ammonia oxidising bacteria, Tvar = temperature seasonality. The total number of observations in all models = 85, the total number of sites in all models = 30

with increasing distance to the equator. However, the meta-analyses may not be comparable to our more closely controlled study from a single vegetation type, because they included a wide range of data from different land-use and vegetation types (croplands, wetlands, forests, shrublands, grasslands) and incubation conditions (duration, temperature, and soil moisture).

The variation in realised soil net N_{min} across our 30 grassland sites was jointly explained by positive effects of temperature of the wettest quarter and microbial biomass (Model 1; Table 2); by microbial biomass alone (Model 2, Table 2), clay alone (Models 3, Table 2) or by a positive effect of temperature of the wettest quarter combined with a negative effect of soil bulk density (Model 4; Table 2). Many studies consider soil organic C as one of the main drivers of soil net N_{min} . In our study, soil organic C was highly correlated with soil microbial biomass ($r = 0.85$). When replacing microbial biomass with soil organic C the model selection process yielded similar results (Models 1–3; Supplementary Table 3). Together our findings suggest that with higher temperature of the wettest quarter and more microbial biomass (or soil organic C), more organic matter was mineralised by soil

microbes. The greater explanatory power of temperature of the wettest quarter, as opposed to MAT or MAP, shows that annual averages may be less useful for predicting ecosystem processes than more temporally specific climatic variables^{30,34}; higher temperatures may only promote soil biological activity if soil moisture levels are sufficiently high³⁵. Our results also suggest that sites with higher soil clay content and lower soil bulk density likely featured more conducive soil micro-climatic conditions for soil microbes to thrive and allowed for higher realised soil net N_{min} . In contrast to microbial biomass, soil clay content and soil organic C, soil bulk density is usually not considered a key predictor of soil N mineralisation^{11,12}. Here, we show that bulk density as a measure of favourable soil structure improved predictions of realised soil net N_{min} . Future soil net N_{min} studies and simulation studies for soil N cycling may benefit from including bulk density.

Potential soil net N_{min} was higher when more AOB were present at the start of the incubation (Models 5, 6, Table 2). However, there is no mechanistic link between AOB and potential soil net N_{min} , because AOB only transform ammonium to nitrate, but do not drive net production of total inorganic nitrogen in the soil. Yet, AOB abundance was positively correlated with potential net nitrification (Supplementary Fig. 4), which is similar to previous findings^{36–39}. Further, potential soil net N_{min} was positively influenced by temperature seasonality and was negatively affected by temperature of the wettest quarter (Models 5, 6, 8, 9, Table 2). The same models were selected when we replaced soil microbial biomass with organic C (Models 4–7, Supplementary Table 3). However, higher potential soil net N_{min} was also explained by higher soil microbial biomass alone (Model 7; Table 2) and microbial biomass was positively correlated with potential soil net nitrification (Supplementary Fig. 5). Our results agree with findings of a recent meta-analysis that identified soil microbial biomass as an important driver of potential soil net N_{min} ¹⁹. In addition, the effect of microbial biomass on potential soil net N_{min} indicates that a quantitatively improved understanding of the soil microbial community could likely improve soil biogeochemical models^{40,41}. In addition, the selection of the two climate variables rather than the expected individual soil physical and chemical variables as predictors of potential soil net N_{min} suggests that there is a long-term legacy effect of climate on these grasslands that we were not able to capture with the soil physico-chemical variables that we measured^{17,18}.

Soil C:N ratio is often regarded as an important predictor of soil net N_{min} as it determines the transition from net N immobilisation to net N mineralisation^{16,42}. However, soil C:N was not important in our study as all but one (temple.us) of our grassland soils had C:N ratios below the critical threshold of 20. Also contrary to our expectations, realised and potential soil net N_{min} were both partially constrained by climatic variables. Interestingly, temperature of the wettest quarter positively influenced realised soil net N_{min} , but had a negative effect on potential N_{min} (Table 2, also see Fig. 5). This pattern suggests that N mineralisation may 'acclimatise' along climate gradients^{43,44}: greater mineralisation occurring in a warmer and wetter climate may lead to the depletion of easily available organic N pools compared to soils from cooler climates. When incubated under constant temperature in the laboratory, mineralisation rates from substrate-depleted soils from warmer climates were less than those from soils of cold regions where labile organic N has accumulated for centuries^{43,44}. Alternatively, physical disturbance and disruption of the soil structure caused by sieving and sample homogenisation may have more profoundly affected the samples from warmer and wetter climates. Finally, it could be that the soil microbes did not perform as well as expected in the laboratory because the 20 °C incubation temperature was considerably lower

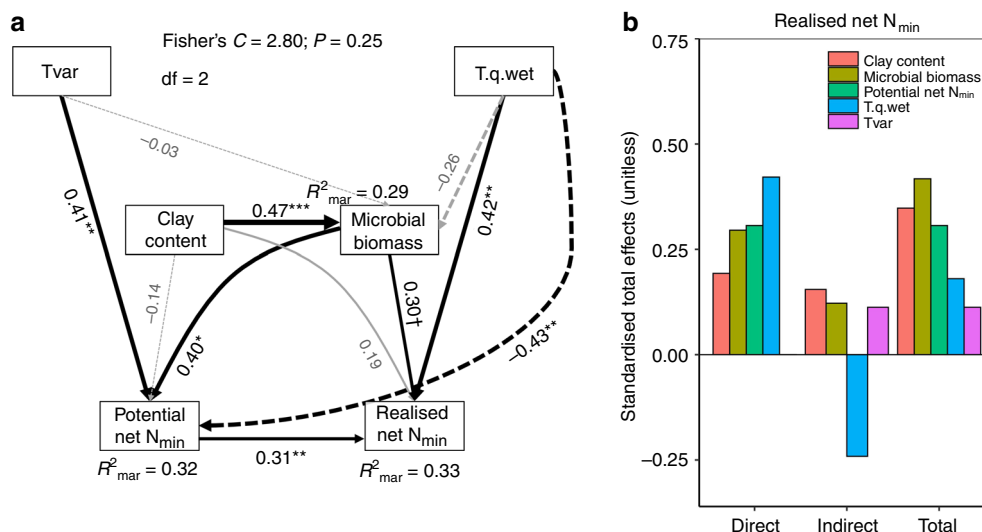


Fig. 5 Global drivers of realised soil net N mineralisation (soil net N_{min}). **a** Structural equation modelling diagram representing connections between climatic conditions, soil physical, chemical and biological properties found to influence realised and potential soil net N mineralisation. The width of the connections represents estimates of the standardised path coefficients, with solid lines representing a positive relationship and dashed lines a negative relationship. Significant connections and R^2 are shown in black, non-significant ones in light-grey. **b** Standardised total, direct and indirect effects of variables associated with realised soil net N min. † $p < 0.1$, * $p < 0.05$, ** $p < 0.01$, *** $p < 0.001$. Clay content = soil clay content, Microbial biomass = soil microbial biomass, Tvar = temperature seasonality, T.q.wet = temperature of the wettest quarter. The total number of observations = 85, the total number of sites = 30

than the field temperatures during peak growing season at the warmer and wetter sites. Thus, the potentials we measured may not have represented full potential mineralisation for these sites.

Estimating soil net N mineralisation in grasslands worldwide.

By combining the identified main drivers from the LMMs and potential net N_{min} (Figs. 3 and 5, Table 1), we produced a SEM model that explained 33% (marginal R^2) of the variation in realised soil net N_{min} across these grasslands (Fig. 5a). This is similar to the explained variability in potential soil net N_{min} measured in other studies^{14,16,19}. The model revealed a new system-level understanding of the controls on global-scale patterns in realised net N_{min} by showing that temperature of the wettest quarter, soil microbial biomass, and potential soil net N_{min} (positive effects) can be directly related to realised soil net N_{min} . Soils with higher clay content, which have higher soil microbial biomass, have higher potential soil net N_{min} , altogether having a positive effect on realised soil net N_{min} (Fig. 5a, b). The negative effect of temperature of the wettest quarter and the positive effect of temperature variability represent a legacy effect of climate on soil properties that affect potential soil net N_{min} . Again, our findings were very similar when we substituted soil microbial biomass with soil organic C (Supplementary Fig. 6).

This study is the first to directly and simultaneously compare realised and potential soil net N_{min} across a globally relevant range of biotic and climatic conditions in grasslands. The two indices were only weakly related across these grasslands, highlighting the uncertainty in using laboratory measurements of soil net N_{min} to predict rates actually occurring in the field. By combining potential soil net N_{min} with specific climate and soil property data, we produced more robust estimations of realised soil net N_{min} across our global set of grasslands. Thus, our results provide a first insight into how potential soil net N_{min} data that is widely available in the literature could be leveraged to learn more about large-scale N mineralisation processes under field conditions. Accurately quantifying realised N mineralisation is crucial for estimating the role of increasing reactive N in ecosystem functioning. Mis-estimation of these processes could lead to

errors in predicting how N limitation affects ecosystem functioning. Given the global extent of grasslands^{24,25} this could, in turn, substantially affect our predictions of global change-driven impacts on C cycling⁴⁵. Overall, our findings suggest that management activities that alter soil compaction, nutrient content, or microbial community function may interact with future changes in temperature and precipitation regimes to severely impact the amount of N that is mineralised in grassland soils^{22,46}.

Methods

Study sites and experimental design. The 30 study sites are part of the Nutrient Network Global Research Cooperative (NutNet [<https://nutnet.umn.edu/>]; Fig. 2, Supplementary Table 1 and 2). At each site, the effects of nutrient addition and herbivore exclusion treatments are examined via a random-block design²⁸. This block design is replicated three times at the majority of the sites. For four sites, we only had data from one (1 site) and two blocks, respectively. This study is restricted to data collected from the untreated control plots ($n = 85$). Each $5\text{ m} \times 5\text{ m}$ plot is divided into four $2.5\text{ m} \times 2.5\text{ m}$ subplots. Each subplot is further divided into four $1\text{ m} \times 1\text{ m}$ square sampling plots, one of which is set aside for soil sampling²⁸. Plots are separated by at least 1 m wide walkways. Mean annual temperature of our sites ranged from -4 to 19 °C, mean annual precipitation from 252 to 1592 mm, and elevations from 6 to 4241 m above sea level (Fig. 2, Supplementary Table 1). Soil organic C varied from 0.32% to 22.30%, soil total N from 0.03% to 1.25% and the soil C:N ratio from 9.07 to 23.64 across our 30 sites. Also soil clay content (3.0–53.3%) and soil pH (3.25–7.71) spanned a large gradient across the 30 sites (Supplementary Table 2). Thus, our 30 sites cover a wide range of grasslands globally that are typical for the respective region (Fig. 2, Supplementary Tables 1 and 2).

Soil net N mineralisation and soil properties. Each site received an identical package shipped from the Swiss Federal Institute for Forest, Snow and Landscape Research (WSL) with material to be used for sampling and on-site incubations (steel cores and rings, resin bags, caps, gloves, etc.). For the field incubation, we followed the protocol by Risch et al.²⁹. Briefly, at randomised locations in each plot we clipped the vegetation and then we drove a $5 \times 15\text{ cm}$ (diameter \times depth) steel cylinder 13.5 cm deep into the soil so that 1.5 cm on top of the cylinder remained empty. To capture incoming N from run-off and/or deposition, we placed a polyester mesh bag (mesh-size 250 μm) filled with $13.2 \pm 0.9\text{ g}$ of acidic and alkaline exchanger resin (1:1 mixture; ion-exchanger I KA/ion-exchanger III AA, Merck AG, Darmstadt) into the upper 1.5 cm space of the cylinder. The bag was fixed in place with a metal Seeger ring (Bruetsch-Ruegger Holding, Urdorf, Switzerland). Thereafter, we removed 1.5 cm soil at the bottom of the cylinder and placed another resin bag into the cylinder to capture N leached from the soil column. We

made sure that the exchange resin was saturated with H^+ and Cl^- prior to filling the bags by stirring the mixture for 1 h in HCl 1.2 M and then rinsing it with demineralised water until the electrical conductivity of the water reached 5 $\mu S/cm$. The cylinders including the soil core and the resin bags were then re-inserted into the soil, at the same location where the sample was collected, flushed with the soil surface, and incubated for 42 days (range 36–57, see also Fig. 1a). Each site coordinator chose the timing of incubation so that it started 6 weeks prior to peak plant biomass production. All the incubations were completed between February 2015 and January 2016. At the end of the incubation, the cylinders were re-collected and immediately put in a cool box for transport to the home institution, where they were immediately packed in an insulated box together with cool packs or blue ice to halt further mineralisation, and overnight-shipped to WSL. Gloves were worn at all times to avoid contamination of the samples. Immediately upon arrival at the laboratory at WSL, the resin bags and a 20 g subsample of sieved soil (4 mm) from the cylinders were separately extracted in a 100 ml PE-bottle with 80 ml 1 M KCl for 1.5 h on an end-over-end shaker and filtered through ashless folded filter paper (DF 5895 150, ALBET LabScience). We measured NO_3^- (colorimetrically⁴⁷) and NH_4^+ concentrations (flow injection analysis; FIAS 300, Perkin Elmer) on these filtrates.

At the start of the field incubation, we additionally collected two soil cores of 5 cm diameter and 12 cm depth with a steel core at each sampling plot for potential soil net N_{min} , soil chemical and biological analyses (see below). We composited the two samples and then re-used the steel cylinder to collect one additional sample (5 \times 12 cm) to assess soil physical properties. This third sample remained within the steel core and both ends were tightly closed with plastic caps. The capped steel cores were then gently packed to avoid further disturbance and together with the composited soil samples overnight-shipped to the laboratory at WSL.

From the composited samples, we extracted an equivalent of 20 g dry soil with KCl as described above and NO_3^- and NH_4^+ concentrations were measured. Realised soil net N_{min} was then calculated as the difference between the inorganic N content of samples collected at the end of the incubation (plus N extracted from the bottom resin bag) and the N content at the beginning of the incubation and scaled to represent daily mineralisation rates ($mg\ N\ kg^{-1}\ soil\ day^{-1}$)²⁹. Note that our values represent soil net N_{min} for an average period of 42 days prior to peak biomass, i.e., typically during the highest biological activity, and not for the entire year.

A second subsample of the composited sample was used to determine potential soil net N_{min} in the laboratory. For this purpose, we weighed duplicated samples of soil equivalent to 8 g dry soil into 50-ml Falcon tubes. Soil moisture was brought to 60% of the field capacity of each individual plot (see methods for determining field capacity below). The Falcon tubes were tightly closed and incubated at 20 °C for 42 days (6 weeks) in a dark room. Every week the Falcon tubes were opened and ventilated. At the end of the incubation, the soil samples were extracted the same way as described above and NO_3^- and NH_4^+ determined. Potential soil net N_{min} was calculated as the difference between the N content before and after the incubation and scaled to represent daily values. We also calculated both realised and potential soil net N_{min} on an area basis correcting for soil depth and bulk density, expressed as $kg\ N\ ha^{-1}\ 12\ cm^{-1}\ day^{-1}$ and compared these values against our soil net N_{min} expressed in $mg\ N\ kg^{-1}\ soil\ day^{-1}$. The two values correlated well for both realised ($R^2 = 0.899$, $p < 0.001$) and potential ($R^2 = 0.900$, $p < 0.001$) soil net N_{min} . For comparability among studies we decided to express our soil net N_{min} indices in $mg\ N\ kg^{-1}\ soil\ day^{-1}$.

A third subsample from the composited sample, was sieved (4 mm) and used to assess soil biological properties. Metagenomic DNA was isolated from 0.25 g of bulk soil by using the Qiagen Power soil DNA isolation kit and the extracted DNA was quantified with Pico Green⁴⁸. The abundances of archaeal (AOA) and bacterial (AOB) ammonia oxidisers were quantified using real-time PCR. Functional marker genes encoding archaeal and bacterial ammonia mono-oxygenase (archaeal *amoA*, bacterial *amoA*) were quantified by real-time PCR using primers and thermocycling conditions as previously described for bacterial *amoA* (AmoA-1F and AmoA-2R)⁴⁹ and archaeal *amoA* (Arch-amoAF and Arch-amoAR)⁵⁰. All quantitative PCR assays were carried out with equal amounts of template DNA (2 ng DNA) in 20 μl reactions using QuantiTect SYBR Green PCR master mix (Qiagen, Hilden, Germany) on an ABI 7500 (PE Applied Biosystems) real-time PCR instrument⁴⁸. The specificity of the amplification products was confirmed by melting-curve analysis, and the expected sizes of the amplified fragments were checked in a 1.5% agarose gel stained with ethidium bromide. Abundances of bacterial and archaeal *amoA* genes refer to copy numbers per gram dry soil. Standards for qPCR were generated by serial dilution of stocks containing a known number of plasmids carrying the respective functional gene as an insert⁵¹. Reaction efficiencies of qPCRs were 95% (± 2) for archaeal *amoA* and 93% (± 3) for bacterial *amoA*. R^2 values were 0.99 for all runs.

A fourth subsample of the composite sample was sieved (2 mm) and microbial biomass ($\mu g\ C\ mg\ g^{-1}\ soil\ dry\ weight$) was estimated by measuring the maximal respiratory response to the addition of glucose solution (4 mg glucose per gram soil dry weight dissolved in distilled water; substrate-induced respiration method) on $\sim 5.5\ g$ of soil⁵². The rest of the composited sample was dried at 65 °C for 48 h and ground to pass a 2 mm mesh. A subsample was finely ground and analysed for organic C⁵³ and for total C and N concentrations (Leco TruSpec Analyser, Leco, St. Joseph, MI, USA). We pretreated subsamples with HCl to remove inorganic C prior to soil organic C determination for soils with $pH > 7.53$. Mineral soil pH was

measured potentiometrically in 10 mm $CaCl_2$ (soil:solution ratio = 1:2, equilibration time 30 min).

The intact sample within the capped steel core was used to assess field and water holding capacity, fine fraction bulk density, density of the solid phase, soil porosity, and soil texture. For this purpose, the steel core was weighed (without plastic caps), covered with a nylon mesh (SEFAR NITEX 03-60-32, 60 μm mesh) at the bottom and placed in a water bath to saturate the soil core from the bottom-up. The water-saturated soil core was then weighed and placed on a water saturated silt/sand bed with a suction of 60 hPa (pF 1.8; pendant water column of 60 cm) to drain the soil to field capacity. The time elapsing from saturation to drainage of the soil was dependent on soil texture and ranged from 17 and 135 h. After drainage, we weighed the soil (at field capacity), dried it at 105 °C to constant weight and recorded the dry weight. The difference between these two weights corresponds to field capacity. The difference between the weight of the saturated and dried cylinder corresponds to water holding capacity. To calculate the mass of the soil sample, we also weighed the empty steel cylinder and the dried nylon mesh. The density of the solid phase was determined with pycnometers and the pore space was calculated as $\phi = 1 - \frac{\rho_s}{\rho_0}$, where ϕ = pore space, ρ = fine fraction bulk density, ρ_0 = density of the solid phase. Soil texture was determined with the pipette method⁵⁴. Of the three variables sand, silt and clay, we retained soil clay content as an explanatory variable. A list of all soil chemical, physical and biological properties measured can be found in Supplementary Table 4.

Climate data: We selected the following bioclimatic variables that we expected to be important for explaining variability in soil net N_{min} from WorldClim³⁰ (<http://www.worldclim.org/current>, Supplementary Table 4): mean annual temperature (bioclim.T.ann), mean annual precipitation (bioclim.P.ann), the seasonality of annual temperature (bioclim.Tvar), calculated as the standard error of monthly means $\times 100$, temperature of the warmest quarter (bioclim.T.q.warm), temperature of the wettest quarter (bioclim.T.q.wet), temperature of the driest quarter (bioclim.T.q.dry), and precipitation of the wettest quarter (bioclim.P.q.wet; Supplementary Table 4). To obtain a rough estimate of realised soil net N mineralisation over the course of the entire growing season, we obtained daily temperature, precipitation [<ftp://ftp.cdc.noaa.gov/Datasets/>] and potential evapotranspiration (PET [<https://earlywarning.usgs.gov/fews/datadownloads>]) data to calculate the total number of growing days for each site. A growing day was defined to have daily precipitation $> 0.5 \times PET$ and daily minimum temperature $> 0.5\ ^\circ C$ ⁵⁵. All growing days per site were summed to the total length of the growing season. We then multiplied our realised soil net N_{min} with growing season length to assess whether growing season differences among our sites would help to explain latitudinal differences in realised soil net N_{min} .

Numerical calculations and variable selection. We examined the distributions of our explanatory variables. Some of them were highly skewed and therefore were log transformed. We centred and scaled all explanatory variables to have a mean of zero and variance of one. We then filtered our variables to avoid collinearity between them. For this purpose, we performed a correlation analysis (Supplementary Fig. 7). If variables were strongly correlated (Pearson's $|r| > 0.70$)⁵¹, we selected the ones that allowed us to minimise the number of variables (Supplementary Fig. 7, Supplementary Table 5). In case of the highly correlated variables soil bulk density, soil total C, soil organic C, soil total N, soil pore space and microbial biomass, we chose a soil physical, chemical and biological variable each for use: First, soil bulk density as it is easy and inexpensive to measure and therefore likely to be more commonly available in other studies, second, microbial biomass as the only soil biological variable of the group, and third, soil organic C as it is most often thought to drive soil net N mineralisation. In summary, temperature of the warmest quarter, temperature of the driest quarter, precipitation of the wettest quarter, soil total C, soil total N, and soil pore space were removed from the dataset (Supplementary Table 5). We also transformed our two response variables realised and potential soil net N_{min} (square root transformation) to account for a highly skewed data distribution ($y_i = \text{sign}(y_i) \times \sqrt{|y_i|}$; negative values in the data set meant log transformation was not possible).

Statistical analyses. To assess the spatial patterns in soil net N_{min} , we used linear-mixed effect models (LMMs) fitted by likelihood maximisation using the R nlme package⁵⁶ (version 3.131.1) and lme function (R version 3.4.4; R Foundation for Statistical Computing). Realised or potential soil net N_{min} , respectively, was the dependent variable, distance to the equator the fixed factor and site identity a random effect. To determine global drivers of grassland soil net N_{min} , we used multi-model inference³² and LMMs. We separately assessed how our variables explained realised soil net N_{min} and potential soil net N_{min} . Site identity was used as a random effect in these models. We first calculated the full models including all predictor variables (Supplementary Table 5) and then used the MuMin package⁵⁷ (version 1.42.1) to select the simplest models that explained the most variation based on Akaike's information criterion (AIC; model.avg function). We used the corrected AIC (AICc) to account for our small sample size^{32,58} and selected the top models that fell within 2 AICc units ($\Delta AICc < 2$). We present all our top models rather than model averages. We calculated all our models using either microbial biomass or soil organic C as these two measures represent a very similar soil feature and were highly correlated ($r = 0.85$). The models with soil microbial

biomass are included in the main text, the ones with soil organic C in the Supplementary Information.

Based on findings from the LMM analyses and the literature we developed an a priori causal conceptual model of relationships among environmental drivers, potential and realised soil net N_{\min} to test with SEM using a *d-sep* approach^{33,59} (Fig. 3, Table 1). The variables included in this model were the best climatic (temperature of the wettest quarter, temperature seasonality), soil texture (clay content) and soil microbial (microbial biomass) predictor variables from the LMM analyses (Figs. 3, 5a, Table 1). We also calculated the same models using soil organic C instead of microbial biomass (Supplementary Fig. 6). In our LMMs, the temperature of the wettest quarter and/or temperature variability predicted realised and potential soil net N_{\min} . The direct links between climate properties (Tvar, T.q.wet) and potential soil net N_{\min} may represent legacy effects of climate on soil properties that we did not directly measure (see main text). Soil clay content was, in turn, predicted to affect microbial biomass (or soil organic C content), realised and potential net N_{\min} . As we determined microbial biomass prior to incubating the samples in the laboratory or field, we assume that microbial biomass impacts N process rates and not vice versa. Further, as it was the goal of this study to explore if potential soil net N_{\min} in combination with other properties could be used to predict realised soil net N_{\min} , we added a link from potential to realised soil net N_{\min} . We tested our conceptual model (Fig. 3, Table 1) following a *d-sep* approach using the piecewiseSEM package (version 2.0.2)⁵⁹ in R (3.4.0), in which a set of linear structured equations are evaluated individually. This approach allows us to account for nested experimental designs and also to overcome some of the limitations of standard structural equation models such as small sample sizes^{33,59}. We first used the *lme* function of the *nlme* package to model response variables, including site as a random factor. Good fit was assumed when Fisher's *C* values were non-significant ($p > 0.05$). Although the abundance of AOB explained some of the variability in potential soil net N_{\min} , we did not include this variable in our SEMs as there is no mechanistic basis to rationalise that AOB drives the total accumulation of inorganic nitrogen in soil, only its partitioning between ammonium and nitrate. However, we calculated an SEM including AOB to assess if we can predict realised soil net nitrification using our predictors as well as potential soil net nitrification (Supplementary Fig. 8). While we were able to explain potential soil net nitrification well, the model fits rather poorly for realised soil net nitrification (Supplementary Fig. 8).

Reporting summary. Further information on research design is available in the Nature Research Reporting Summary linked to this article.

Data availability

The data will be available at www.envdat.ch. <https://doi.org/10.16904/envdat.87>, Source data for Figs. 2, 4, 5, Supplementary Figs. 1–8 can be found in the source data file.

Received: 20 February 2019; Accepted: 10 October 2019;

Published online: 31 October 2019

References

- Elser, J. J. et al. Global analysis of nitrogen and phosphorus limitation of primary producers in freshwater, marine and terrestrial ecosystems. *Ecol. Lett.* **10**, 1135–1142 (2007).
- Harpole, W. S. et al. Nutrient co-limitation of primary producer communities. *Ecol. Lett.* **14**, 852–862 (2011).
- Fay, P. A. et al. Grassland productivity limited by multiple nutrients. *Nat. Plants* **1**, 1–5 (2015).
- Neff, J. C. et al. Variable effects of nitrogen additions on the stability and turnover of soil carbon. *Nature* **419**, 915–917 (2002).
- Schimel, J. P. & Bennett, J. Nitrogen mineralization: challenges of a changing paradigm. *Ecology* **85**, 591–602 (2004).
- Butterbach-Bahl, K. & Gundersen, P. Nitrogen processes in terrestrial ecosystems. In *The European Nitrogen Assessment* (eds. Sutton, M. A. et al.) 99–125 (Cambridge University Press, 2011).
- Kuzakov, Y. & Xu, X. Competition between roots and microorganisms for nitrogen: mechanisms and ecological relevance. *New Phytol.* **198**, 656–669 (2013).
- Dessureault-Rompré, J. et al. Temperature dependence of soil nitrogen mineralization rate: comparison of mathematical models, reference temperatures and origin of the soils. *Geoderma* **157**, 97–108 (2010).
- Craine, J. M., Fierer, N. & McLaughlan, K. Widespread coupling between the rate and temperature sensitivity of organic matter decay. *Nat. Geosci.* **3**, 854–857 (2010).
- Conant, R. T. et al. Temperature and soil organic matter decomposition rates—synthesis of current knowledge and a way forward. *Glob. Chang. Biol.* **17**, 3392–3404 (2011).
- Giese, M., Gao, Y. Z., Lin, S. & Lin, M. G. S. Nitrogen availability in a grazed semi-arid grassland is dominated by seasonal rainfall. *Plant Soil* **340**, 157–167 (2011).
- Booth, M. S., Stark, J. M. & Rastetter, E. Controls on nitrogen cycling in terrestrial ecosystems: a synthetic analysis of literature data. *Ecol. Monogr.* **75**, 139–157 (2005).
- Giardina, C. P., Ryan, M. G., Hubbard, R. M. & Binkley, D. Tree species and soil textural controls on carbon and nitrogen mineralization rates. *Soil Sci. Soc. Am. J.* **65**, 1272–1279 (2001).
- Liu, Y. et al. A global synthesis of the rate and temperature sensitivity of soil nitrogen mineralization: latitudinal patterns and mechanisms. *Glob. Chang. Biol.* **23**, 455–464 (2017).
- Liu, Y. et al. Patterns and regulating mechanisms of soil nitrogen mineralization and temperature sensitivity in Chinese terrestrial ecosystems. *Agric. Ecosyst. Environ.* **215**, 40–46 (2016).
- Colman, B. P. & Schimel, J. P. Drivers of microbial respiration and net N mineralization at the continental scale. *Soil Biol. Biochem.* **60**, 65–76 (2013).
- Doetterl, S. et al. Soil redistribution and weathering controlling the fate of geochemical and physical carbon stabilization mechanisms in soils of an eroding landscape. *Biogeosciences* **12**, 1357–1371 (2015).
- Wang, X. et al. Soil organic carbon and mineral interactions on climatically different hillslopes. *Geoderma* **322**, 71–80 (2018).
- Li, Z. et al. Microbes drive global soil nitrogen mineralization and availability. *Glob. Chang. Biol.* **25**, 1078–1088 (2019).
- Honeycutt, C. W. et al. Protocols for nationally coordinated laboratory and field research on manure nitrogen mineralization. *Commun. Soil Sci. Plant Anal.* **36**, 2807–2822 (2005).
- Honeycutt, C. W. Nitrogen mineralization from soil organic matter and crop residues: field validation of laboratory predictions. *Soil Sci. Soc. Am. J.* **63**, 134–141 (1999).
- Steffen, W. et al. Planetary boundaries: guiding human development on a changing planet. *Science* **347**, 1259855 (2015).
- Rockström, J. et al. Planetary boundaries: exploring the safe operating space for humanity. *Nature* **461**, 472–475 (2009).
- Lieth, H. *Patterns of Primary Productivity in the Biosphere* (Hutchinson & Ross, 1978).
- White, R., Rohweder, M. & Murray, S. *Pilot Analysis of Global Ecosystems: Grassland Ecosystems*. Technical report (World Resource Institute, 2000).
- Foley, J. A. et al. Global consequences of land use. *Science* **309**, 570–574 (2005).
- Eswaran, H., van den Berg, E. & Reich, P. B. Organic carbon in soils of the world. *Soil Sci. Soc. Am. J.* **57**, 192–194 (1993).
- Borer, E. T. et al. Finding generality in ecology: a model for globally distributed experiments. *Methods Ecol. Evol.* **5**, 65–73 (2014).
- Risch, A. C. et al. Aboveground vertebrate and invertebrate herbivore impact on net N mineralization in subalpine grasslands. *Ecology* **96**, 3312–3322 (2015).
- Hijmans, R. J., Cameron, S. E., Parra, J. L., Jones, G. & Jarvis, A. Very high resolution interpolated climate surfaces for global land areas. *Int. J. Climatol.* **25**, 1965–1978 (2005).
- Dormann, C. F. et al. Collinearity: a review of methods to deal with it and a simulation study evaluating their performance. *Ecography (Cop.)* **36**, 27–46 (2013).
- Burnham, K. P. & Anderson, D. R. *Model Selection and Multimodel Inference: A Practical Information-theoretic Approach* (Springer-Verlag, New York, 2002).
- Shipley, B. Confirmatory path analysis in a generalized multilevel context. *Ecology* **90**, 363–368 (2009).
- Karger, D. N. et al. Climatologies at high resolution for the earth's land surface areas. *Sci. Data* **4**, 170122 (2017).
- Thakur, M. P. et al. Reduced feeding activity of soil detritivores under warmer and drier conditions. *Nat. Clim. Chang.* **8**, 75–78 (2018).
- Di, H. J. et al. Nitrification driven by bacteria and not archaea in nitrogen-rich grassland soils. *Nat. Geosci.* **2**, 621 (2009).
- Banning, N. C., Maccarone, L. D., Fisk, L. M. & Murphy, D. V. Ammonia-oxidising bacteria not archaea dominate nitrification activity in semi-arid agricultural soil. *Sci. Rep.* **5**, 11146 (2015).
- Lammel, D. R., Feigl, B. J., Cerri, C. C. & Nüsslein, K. Specific microbial gene abundances and soil parameters contribute to C, N, and greenhouse gas process rates after land use change in Southern Amazonian Soils. *Front. Microbiol.* **6**, 1057 (2015).
- Hawkes, C. V., Wren, I. F., Herman, D. J. & Firestone, M. K. Plant invasion alters nitrogen cycling by modifying the soil nitrifying community. *Ecol. Lett.* **8**, 976–985 (2005).
- Bradford, M. A. & Fierer, N. The biogeography of microbial communities and ecosystem processes: implication for soil and ecosystem models. In *Soil Ecology and Ecosystem Services* (ed. Wall, D. H.) 189–200 (Oxford University Press, 2012).

41. Crowther, T. W. et al. The global soil community and its influence on biogeochemistry. *Science* **365**, eaav0550 (2019).
42. Mooshammer, M. et al. Adjustment of microbial nitrogen use efficiency to carbon:nitrogen imbalances regulates soil nitrogen cycling. *Nat. Commun.* **5**, 3694 (2014).
43. Eliasson, P. E. et al. The response of heterotrophic CO₂ flux to soil warming. *Glob. Chang. Biol.* **11**, 167–181 (2005).
44. Hagedorn, F. & Joos, O. Experimental summer drought reduces soil CO₂ effluxes and DOC leaching in Swiss grassland soils along an elevational gradient. *Biogeochemistry* **117**, 395–412 (2014).
45. Luo, Y. et al. Progressive nitrogen limitation of ecosystem responses to rising atmospheric carbon dioxide. *Bioscience* **54**, 731–740 (2004).
46. Fischer, E. M. & Knutti, R. Detection of spatially aggregated changes in temperature and precipitation extremes. *Geophys. Res. Lett.* **41**, 547–554 (2014).
47. Norman, R. & Stucki, J. W. The determination of nitrate and nitrite in soil extracts by ultraviolet spectrophotometry. *Soil Sci. Soc. Am. J.* **45**, 347–353 (1981).
48. Rime, T., Hartmann, M. & Frey, B. Potential sources of microbial colonizers in an initial soil ecosystem after retreat of an alpine glacier. *ISME J.* **10**, 1625–1641 (2016).
49. Rotthauwe, J.-H., Witzel, K.-P. & Liesack, W. The ammonia monooxygenase structural gene amoA as a functional marker: molecular fine-scale analysis of natural ammonia-oxidizing populations. *Appl. Environ. Microbiol.* **63**, 4704–4712 (1997).
50. Francis, C. A., Roberts, K. J., Beman, J. M., Santoro, A. E. & Oakley, B. B. Ubiquity and diversity of ammonia-oxidizing archaea in water columns and sediments of the ocean. *Proc. Natl Acad. Sci. USA* **102**, 14683–14688 (2005).
51. Frey, B., Niklaus, P. A., Kremer, J., Lüscher, P. & Zimmermann, S. Heavy-machinery traffic impacts methane emissions as well as methanogen abundance and community structure in oxic forest soils. *Appl. Environ. Microbiol.* **77**, 6060–6068 (2011).
52. Anderson, J. & Domsch, K. A physiological method for the quantitative measurement of microbial biomass in soil. *Soil Biol. Biochem.* **10**, 215–221 (1978).
53. Walthert, L. et al. Determination of organic and inorganic carbon, δ¹³C and nitrogen in soils containing carbonates after acid fumigation with HCl. *J. Plant Nutr. Soil Sci.* **173**, 207–216 (2010).
54. Gee, G. W. & Bauder, J. W. Particle-size analysis. In *Methods of Soil Analysis, Part I, Physical and Mineralogical Methods, Agronomy Monograph no. 9* (ed Klute, A.) 383–411 (American Society of Agronomy and Soil Science Society of America, 1986).
55. IIASA/FAO. *Global agro-ecological zones (GAEZ v3.0)* (2012).
56. Pinheiro, J., Bates, D., DebRoy, S., Sarkar, D. & R Core development team. *nlme: Linear nonlinear mixed Eff. models R. package version 2.1-128* (2016).
57. Barton, K. *MuMIn: Multi-model infernece. R package version 1.42.1* (2018).
58. Johnson, J. B. & Omland, K. S. Model selection in ecology and evolution. *Trends Ecol. Evol.* **19**, 101–108 (2004).
59. Lefcheck, J. S. piecewiseSEM: piecewise structural equation modelling in R for ecology, evolution, and systematics. *Methods Ecol. Evol.* **7**, 573–579 (2016).
60. Maestre, F. T. et al. Increasing aridity reduces soil microbial diversity and abundance in global drylands. *Proc. Natl Acad. Sci. USA* **112**, 15684–15689 (2015).
61. Serna-Chavez, H. M., Fierer, N. & van Bodegom, P. M. Global drivers and patterns of microbial abundance in soil. *Glob. Ecol. Biogeogr.* **22**, 1162–1172 (2013).

Acknowledgements

We appreciate the many helpful comments from two anonymous reviewers that greatly improved the manuscript. This work was conducted within the Nutrient Network (<http://www.nutnet.org>) experiment, funded at the site-scale by individual researchers. The soil net Nmin add-on study was funded by two internal competitive WSL grants to A.C.R., B.M., M.Sc., F.H. and S.Z. as well as to B.F., A.C.R. and S.Z. Coordination and data management have been supported by funding from the National Science Foundation Research Coordination Network (NSF-DEB-1042132) to

E.T.B. and E.W.S., and from the Long-Term Ecological Research (LTER) programme (NSF-DEB-1234162), and the Institute on the Environment at the University of Minnesota (DG-0001-13). We also thank the Minnesota Supercomputer Institute for hosting project data, and the Institute on the Environment for hosting Network meetings. We are grateful to Roger Köchli and Simon Baumgartner for their help with sample processing and analyses, and to Benjamin R. Fitzpatrick for support with calculating growing season lengths and statistical advice. In addition, A.di V. thanks the Nature Conservancy, Gustavo Iglesias and People from Fortin Chacabuco Ranch for access to the field plots to conduct field work there. L.Y. was supported by Universidad de Buenos Aires and Agencia Nacional de Promocion Cientifica y Tecnologica (PICT 2014-3026), and S.M.P. thanks Georg Wiehl for technical assistance, Denise and Malcolm French for use of Mt. Caroline and the support from the TERN Great Western Woodlands SuperSite. N.E. and J.S. acknowledge support of the German Centre for Integrative Biodiversity Research (iDiv) Halle-Jena-Leipzig funded by the German Research Foundation (FZT 118).

Author contributions

A.C.R., S.Z., M.Sc., F.H. and B.M. developed the idea. A.C.R., R.O.-H. and B.M. analysed the data and M.Sc., J.L.F., F.H., P.B.A. contributed to data analyses. A.C.R. wrote the paper with input of S.Z., R.O.H., M.Sc., B.F., J.L.F., P.A.F., F.H., E.T.B., E.W.S., W.S.H., J.M.H.K., R.L.McC., A.A.D.B., C.J.S., M.L.S., P.B.A., S.B., L.A.B., J.M.B., C.S.B., M.C.C., S.L.C., P.D., A.di V., A.Eb, N.E., E.E., A.Es, N.H., Y.H., K.P.K., A.S.McD., J.L.M., S.A.P., S.M.P., C.R., M.Sa., J.S., K.L.S., P.M.T., R.V., L.Y. and M.B. S.Z., B.F. and J.S. analysed the samples. All authors but S.Z., R.O.-H., B.F., F.H., J.S. and B.M. are NutNet site coordinators, collected and shipped the soil data and samples. E.T.B., E.W.S. and W.S.H. are NutNet network coordinators. A detailed listing of author contributions can be found in the author contribution matrix (Supplementary Table 6).

Competing interests

The authors declare no competing interests.

Additional information

Supplementary information is available for this paper at <https://doi.org/10.1038/s41467-019-12948-2>.

Correspondence and requests for materials should be addressed to A.C.R.

Peer review information *Nature Communications* thanks Xiaorong Wei and the other, anonymous, reviewer(s) for their contribution to the peer review of this work. Peer reviewer reports are available.

Reprints and permission information is available at <http://www.nature.com/reprints>

Publisher's note Springer Nature remains neutral with regard to jurisdictional claims in published maps and institutional affiliations.



Open Access This article is licensed under a Creative Commons Attribution 4.0 International License, which permits use, sharing, adaptation, distribution and reproduction in any medium or format, as long as you give appropriate credit to the original author(s) and the source, provide a link to the Creative Commons license, and indicate if changes were made. The images or other third party material in this article are included in the article's Creative Commons license, unless indicated otherwise in a credit line to the material. If material is not included in the article's Creative Commons license and your intended use is not permitted by statutory regulation or exceeds the permitted use, you will need to obtain permission directly from the copyright holder. To view a copy of this license, visit <http://creativecommons.org/licenses/by/4.0/>.

© The Author(s) 2019

A.C. Risch^{1*}, S. Zimmermann¹, R. Ochoa-Hueso², M. Schütz¹, B. Frey¹, J.L. Firn³, P.A. Fay⁴, F. Hagedorn¹, E.T. Borer⁵, E.W. Seabloom⁵, W.S. Harpole^{6,7,8}, J.M.H. Knops^{9,10}, R.L. McCulley¹¹, A.A.D. Broadbent^{12,13}, C.J. Stevens¹³, M.L. Silveira¹⁴, P.B. Adler¹⁵, S. Báez¹⁶, L.A. Biederman¹⁷,

J.M. Blair¹⁸, C.S. Brown¹⁹, M.C. Caldeira²⁰, S.L. Collins²¹, P. Daleo²², A. di Virgilio²³, A. Ebeling²⁴, N. Eisenhauer^{7,25}, E. Esch²⁶, A. Eskelinen^{6,7,27}, N. Hagenah²⁸, Y. Hautier²⁹, K.P. Kirkman³⁰, A.S. MacDougall³¹, J.L. Moore³², S.A. Power³³, S.M. Prober³⁴, C. Roscher^{6,7}, M. Sankaran^{35,36}, J. Siebert^{7,25}, K.L. Speziale²³, P.M. Tognetti³⁷, R. Virtanen^{6,7,27}, L. Yahdjian³⁷ & B. Moser¹

¹Swiss Federal Institute for Forest, Snow and Landscape Research WSL, Zuercherstrasse 111, 8903 Birmensdorf, Switzerland. ²Department of Biology, IVAGRO, University of Cádiz, Campus de Excelencia Internacional Agroalimentario (ceiA3), Campus Rio San Pedro, 11510 Puerto Real, Cádiz, Spain. ³Queensland University of Technology (QUT), School of Earth, Environmental and Biological Sciences, Science and Engineering Faculty, Brisbane, QLD 4001, Australia. ⁴USDA-ARS Grassland Soil, and Water Research Laboratory, Temple, TX 76502, USA. ⁵Department of Ecology, Evolution, and Behavior, University of Minnesota, St. Paul, MN, USA. ⁶Department of Physiological Diversity, Helmholtz Center for Environmental Research—UFZ, Permoserstrasse 15, Leipzig 04318, Germany. ⁷German Centre for Integrative Biodiversity Research (iDiv) Halle-Jena-Leipzig, Deutscher Platz 5e, Leipzig 04103, Germany. ⁸Institute of Biology, Martin Luther University Halle-Wittenberg, Am Kirchtor 1, Halle (Saale) 06108, Germany. ⁹School of Biological Sciences, University of Nebraska, 211A Manter Hall, Lincoln, NE 68588, USA. ¹⁰Department of Health and Environmental Sciences, Xi'an Jiaotong Liverpool University, Suzhou 215213, China. ¹¹Department of Plant & Soil Sciences, University of Kentucky, Lexington, KY 40546-0312, USA. ¹²School of Earth and Environmental Sciences, Michael Smith Building, The University of Manchester, Oxford Road, Manchester M13 9PT, UK. ¹³Lancaster Environment Centre, Lancaster University, Lancaster LA1 4YQ, UK. ¹⁴University of Florida, Range Cattle Research and Education Center, Ona, FL 33865, USA. ¹⁵Department of Wildland Resources and the Ecology Center, Utah State University, 5230 Old Main, Logan, UT 84103, USA. ¹⁶Departamento de Biología, Escuela Politécnica Nacional del Ecuador, Ladrón de Guevara E11-253 y Andalucía, Quito, Ecuador. ¹⁷Department of Ecology, Evolution, and Organismal Biology, Iowa State University, Ames, IA 50011, USA. ¹⁸Division of Biology, Kansas State University, Manhattan, KS 66502, USA. ¹⁹Department of Bioagricultural Sciences and Pest Management, Graduate Degree Program in Ecology, Colorado State University, 1177 Campus Delivery, Fort Collins, CO, USA. ²⁰Centro de Estudos Florestais, Instituto Superior de Agronomia, Universidade de Lisboa, Tapada da Ajuda, 1349-017 Lisboa, Portugal. ²¹Department of Biology, University of New Mexico, Albuquerque, NM 87131, USA. ²²Instituto de Investigaciones Marinas y Costeras (IIIMyC), Universidad Nacional de Mar del Plata, CONICET, Mar del Plata, Argentina. ²³INIBIOMA (CONICET-UNCOMA), Universidad Nacional del Comahue, Grupo de Investigaciones en Biología de la Conservación (GrInBiC) Laboratorio Ecotono, Quintral, 1250 Bariloche, Argentina. ²⁴Institute of Ecology and Evolution, Friedrich-Schiller-University Jena, Dornburger Str. 159, 07743 Jena, Germany. ²⁵Institute of Biology, Leipzig University, Deutscher Platz 5e, 04103 Leipzig, Germany. ²⁶University of California San Diego, 9500 Gilman Dr, La Jolla, CA 92037, USA. ²⁷Department of Ecology and Genetics, University of Oulu, Pentti Kaiteran katu 1, 90014 Oulu, Finland. ²⁸Mammal Research Institute, Department of Zoology & Entomology, University of Pretoria, Pretoria, South Africa. ²⁹Ecology and Biodiversity Group, Department of Biology, Utrecht University, Padualaan 8, 3584 CH Utrecht, The Netherlands. ³⁰University of KwaZulu-Natal, Pietermaritzburg, Private Bag X01, Scottsville 3209, South Africa. ³¹Department of Integrative Biology, University of Guelph, Guelph N1G 2W1 ON, Canada. ³²School of Biological Sciences, Monash University, Clayton, VIC 3800, Australia. ³³Hawkesbury Institute for the Environment, Western Sydney University, Locked Bag 1797, Penrith, NSW 2751, Australia. ³⁴CSIRO Land and Water, Private Bag 5, Wembley, WA 6913, Australia. ³⁵National Centre for Biological Sciences, TIFR, Bangalore 560065, India. ³⁶School of Biology, University of Leeds, Leeds LS2 9JT, UK. ³⁷Universidad de Buenos Aires, Facultad de Agronomía, Instituto de Investigaciones Fisiológicas y Ecológicas vinculadas a la Agricultura (IFEVA), CONICET, Buenos Aires, Argentina. *email: anita.risch@wsl.ch